

more than 75 year long tradition

7 faculties


7 300 students

WELCOME AT UPCE



Take a Tour

Content

- About the university
 - UPCE Campus
 - Faculties outside of the Main Campus
 - International Office
 - Faculty Coordinators
 - Accommodation
 - Erasmus Student Network (ESN)
 - Healthcare Club
 - Health Insurance
 - Library
 - Transport
 - More Information
 - Student Holidays
 - Connect to UPCE
 - Food and Drinks on the Campus
 - Money
 - At the End of the Mobility
 - Contact information
- 



About the University

UPCE offers

- 50 study programmes in English
- top scientific teams
- well-equipped classrooms and laboratories

Chemists and economists, philosophers and historians, health professionals, transport experts, electrical engineers and computer scientists, and restorers study here.



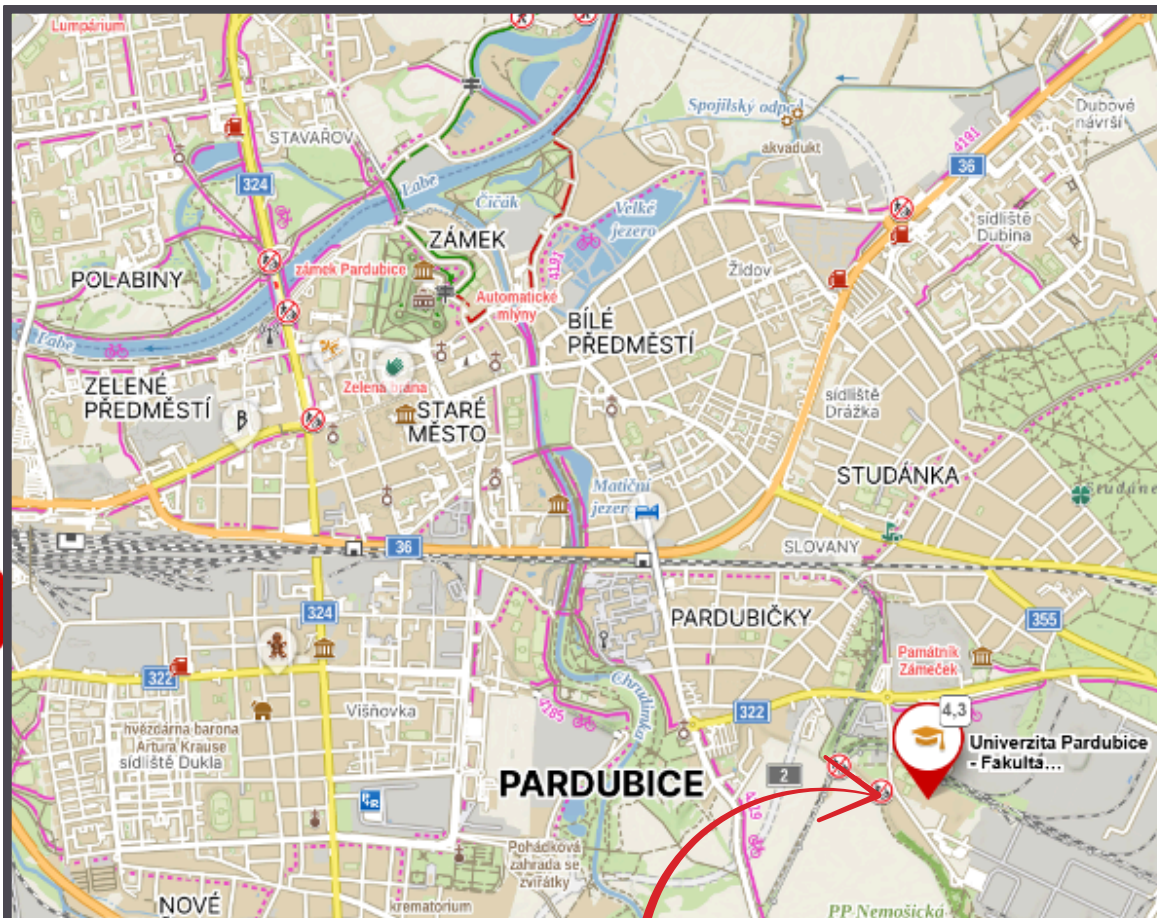
UPCE Campus



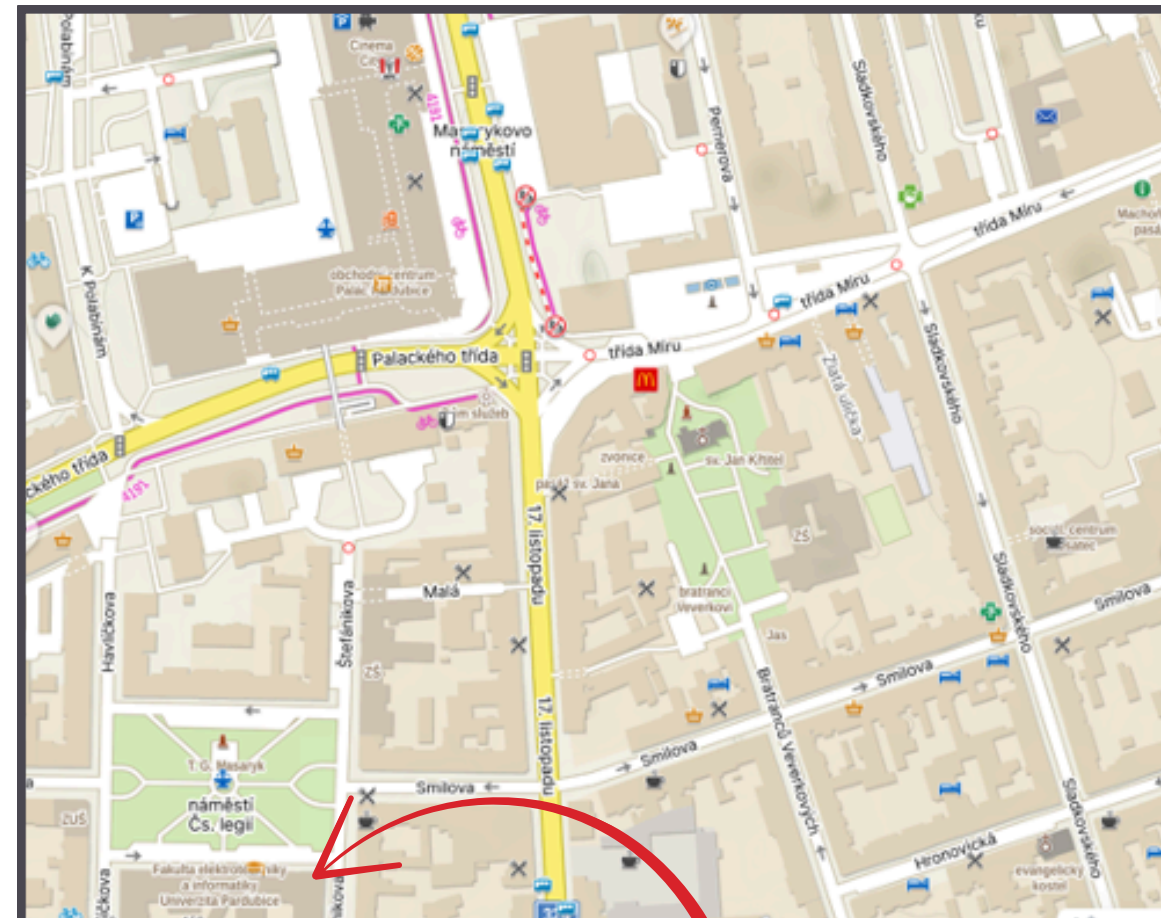
- Faculty of Arts and Philosophy (FF)
- Faculty of Chemical Technology (FChT)
- Faculty of Economics and Administration (FES)
- Faculty of Transport Engineering (DFJP)



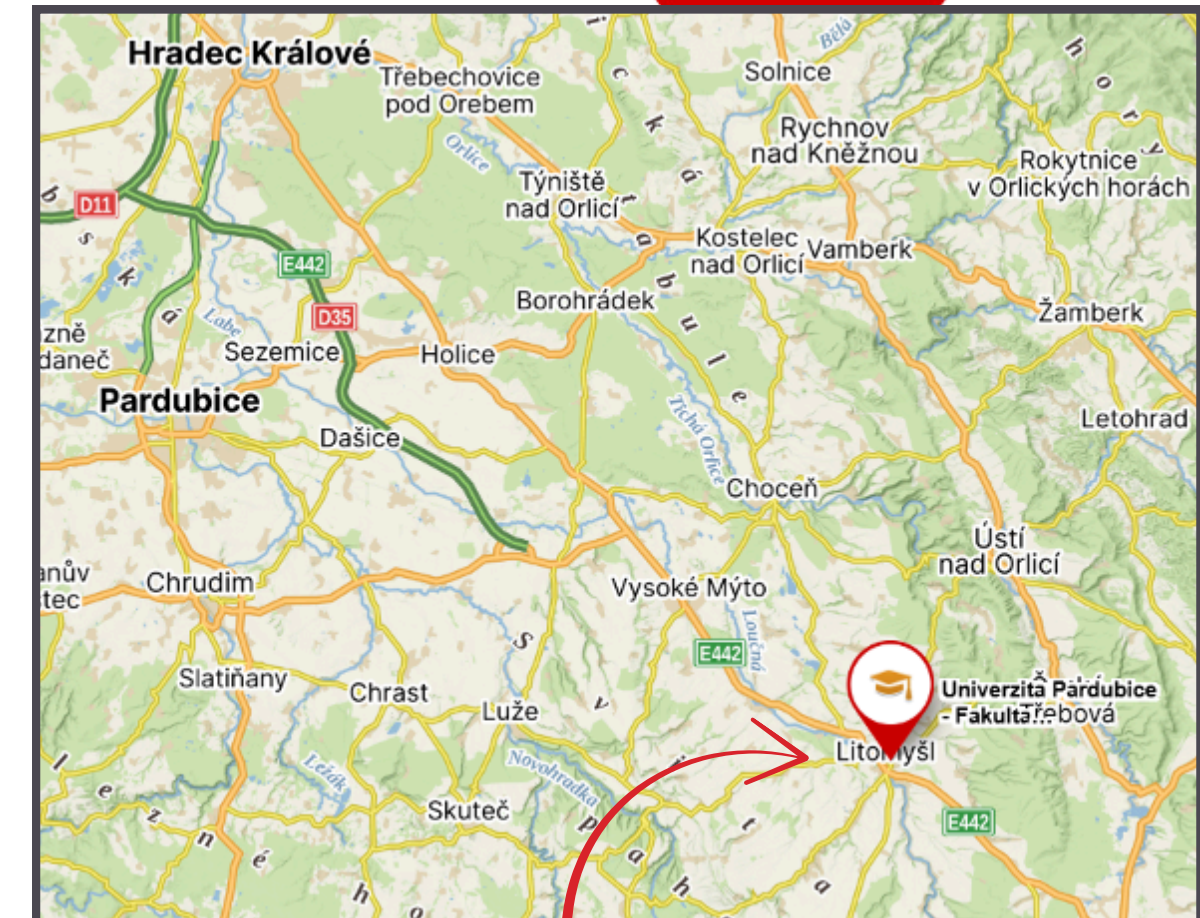
Faculties outside of the Main Campus



**Faculty of Health Studies
(FZS)**



**Faculty of Electrical
Engineering and Informatics
(FEI)**



**Faculty of Restoration
(FR)**

International Office



**Věra
Albrechtová**

vera.albrechtova@upce.cz

Head of IO

**Martina
Votoupalová**

martina.votoupalova@upce.cz

Incoming students



Faculty Coordinators



**Olga
Linhartová**

olga.linhartova@upce.cz

Economics and
Administration
FES



**Nela
Dosedělová**

nela.dosedelova@upce.cz

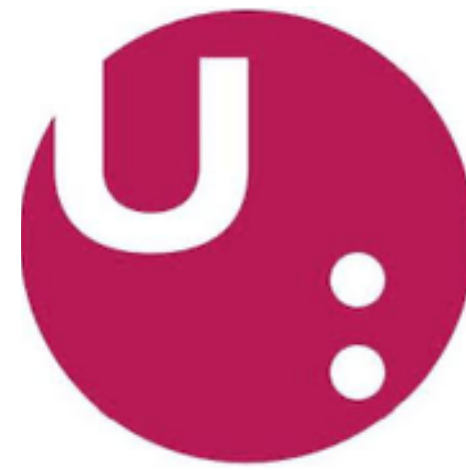
Transport
Engineering
DJFP



**Drahomíra
Ciberová**

drahomira.ciberova@upce.cz

Health Studies
FZS



**Hana
Hrašová**

hana.hrasova@upce.cz

Chemical
Technology
FCHT



**Michaela
Fišerová**

michaela.fiserova@upce.cz

Arts and
Philosophy
FF



**Hana
Holubová**

hana.holubova@upce.cz

Electrical Engineering
and Informatics
FEI



**Pavla
Nováková**

pavla.novakova@upce.cz

Restoration
FR

Your Faculty Coordinator helps you with your studies at UPCE.



Accommodation

The Accommodation Coordinator will help you with

- enquiries and reservation
- accommodation rules
- payment

**Martina
Rösslerová**

iskam@upce.cz

ubytovani@upce.cz

Accommodation Coordinator

[Get more information about the accomodation](#)

Erasmus Student Network

[Register here](#)

Strongly recommended !!



- get help at your arrival
- find your buddy
- have fun at get-togethers and other events
- go on trips



[@esnpardubice](#)

[Get more information about ESN](#)



Your Health – UPCE Healthcare club

UPCE HEALTHCARE CLUB OFFERS

- an initial medical consultation
- basic medical advice and treatment
- finding appropriate help within the Czech healthcare system
- assistance at doctors' appointments
- support regarding health insurance

CONTACT

healthcare@upce.cz

+420 724 878 439 (if urgent)

In emergency always call **112** – emergency medical service.

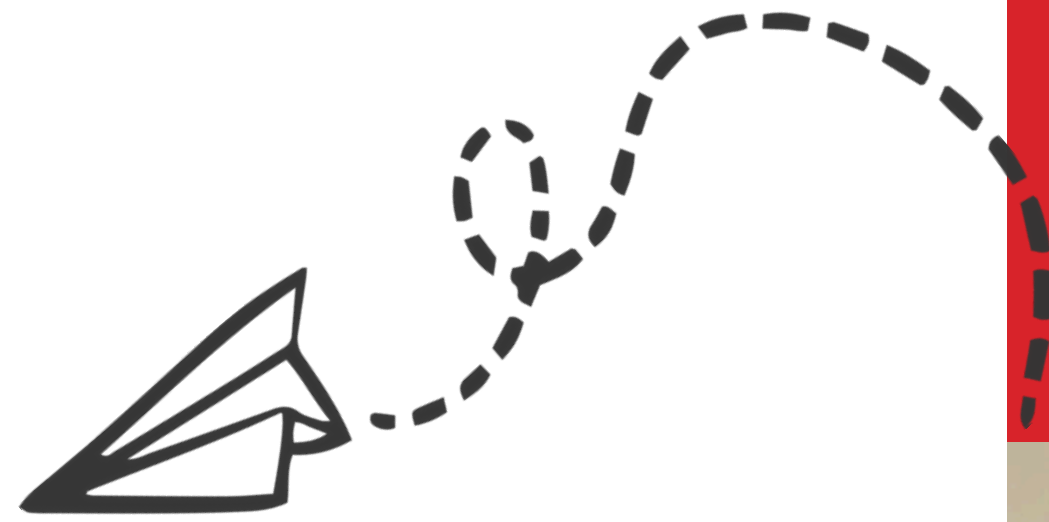


Health Insurance

- Holders of EU Insurance can register after their arrival at a Czech Insurance company for free (essential care only). You can do so, for example, at the insurance company VZP.
- After your arrival, you can register at their office in Pardubice: Karla IV. 73, 530 02 Pardubice.
- You have to bring following documents with you:
 - your ID,
 - your EU insurance card,
 - confirmation of study at UPCE.



Library



- come and borrow books, newspapers and journals
 - study
 - scan and copy
 - or just relax
-

Opening hours

Monday–Wednesday 8 am – 8 pm

Thursday 8 am – 6 pm

Friday 8 am – 4 pm



[Get more information about the library.](#)

Transport

[TIMETABLES IN PARDUBICE](#)

[TIMETABLES IN CZECHIA](#)

The easiest way from the Prague Airport to the main train station in Prague (Praha hlavní nádraží) is to take EA bus line (Airport Express): the bus stop is in front of the Terminal 1 Arrivals hall. You can pay on the bus to the driver.

From Pardubice's train station you can get to the University of Pardubice campus by taking bus number 3, 33 or 17 (the stop "Terminál Univerzita" is in front of the University Library). Another possibility is bus number 30 and 16 (the stop "Univerzita" is located in the centre of the University campus). You can pay on the bus with your bank card by approaching the machine with your card.

Tickets for trains in Czechia are to be purchased online or at the train stations.

Tickets for regional buses in Czechia are to be purchased on the bus.



More information

Orientation week

The first week of your Erasmus stay
You will receive detailed information
by email.

Guidebook

Do you want to learn more about
UPCE and Pardubice? Feel free to
download our [Guidebook](#).





Student holidays

	Date	Description of holiday
Winter	September 28 th	St. Wenceslas Day & Czech Statehood Day
	October 28 th	Establishment of Czech state
	November 17 th	Velvet revolution
	December 22 nd – January 1 st	Winter vacation
Summer	April 3 rd – April 6 th	Easter Holiday
	May 1 st	Labour Day
	May 8 th	Liberation from Nazis
	July 5 th	Saints Cyril and Methodius Day
	July 6 th	Jan Hus Day
	After June 29 th	Summer Vacation

On those days, the university and some shops might be closed.



AFTER YOUR ARRIVAL

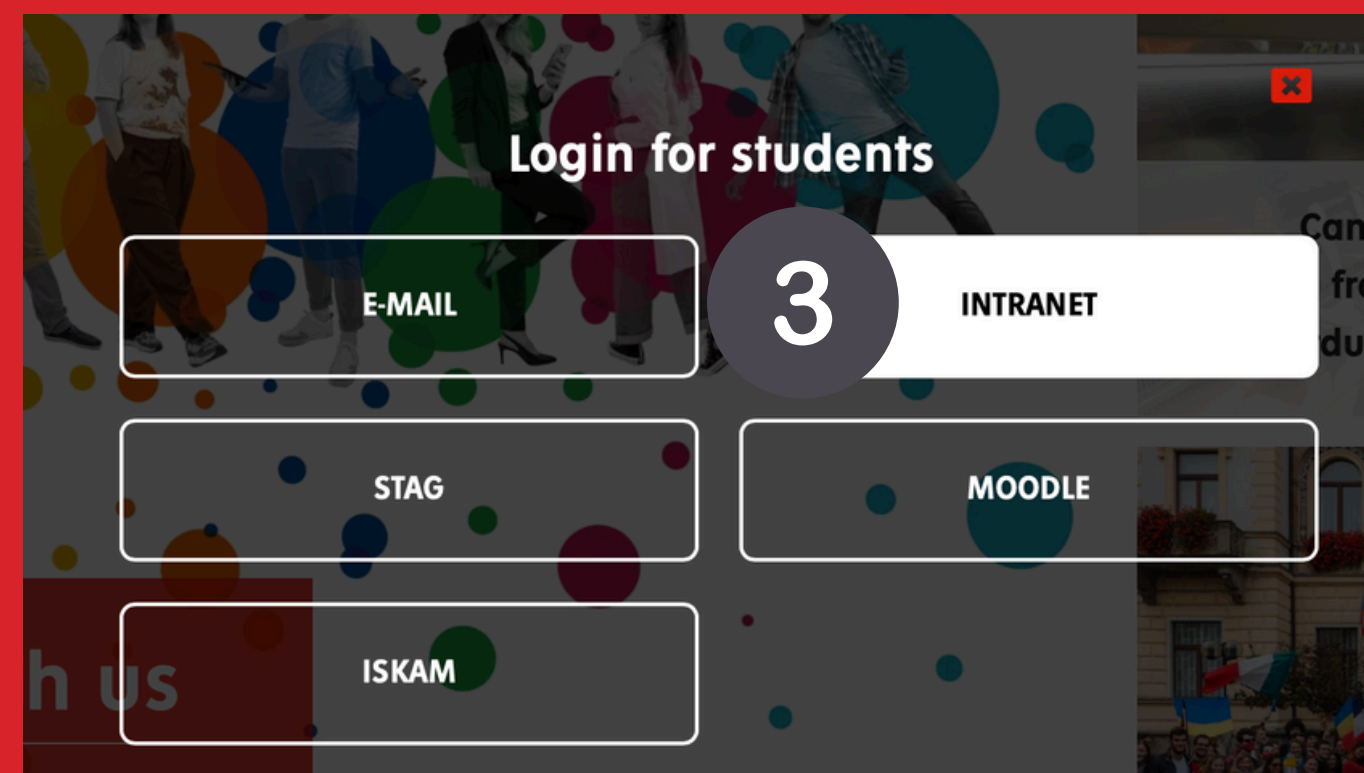
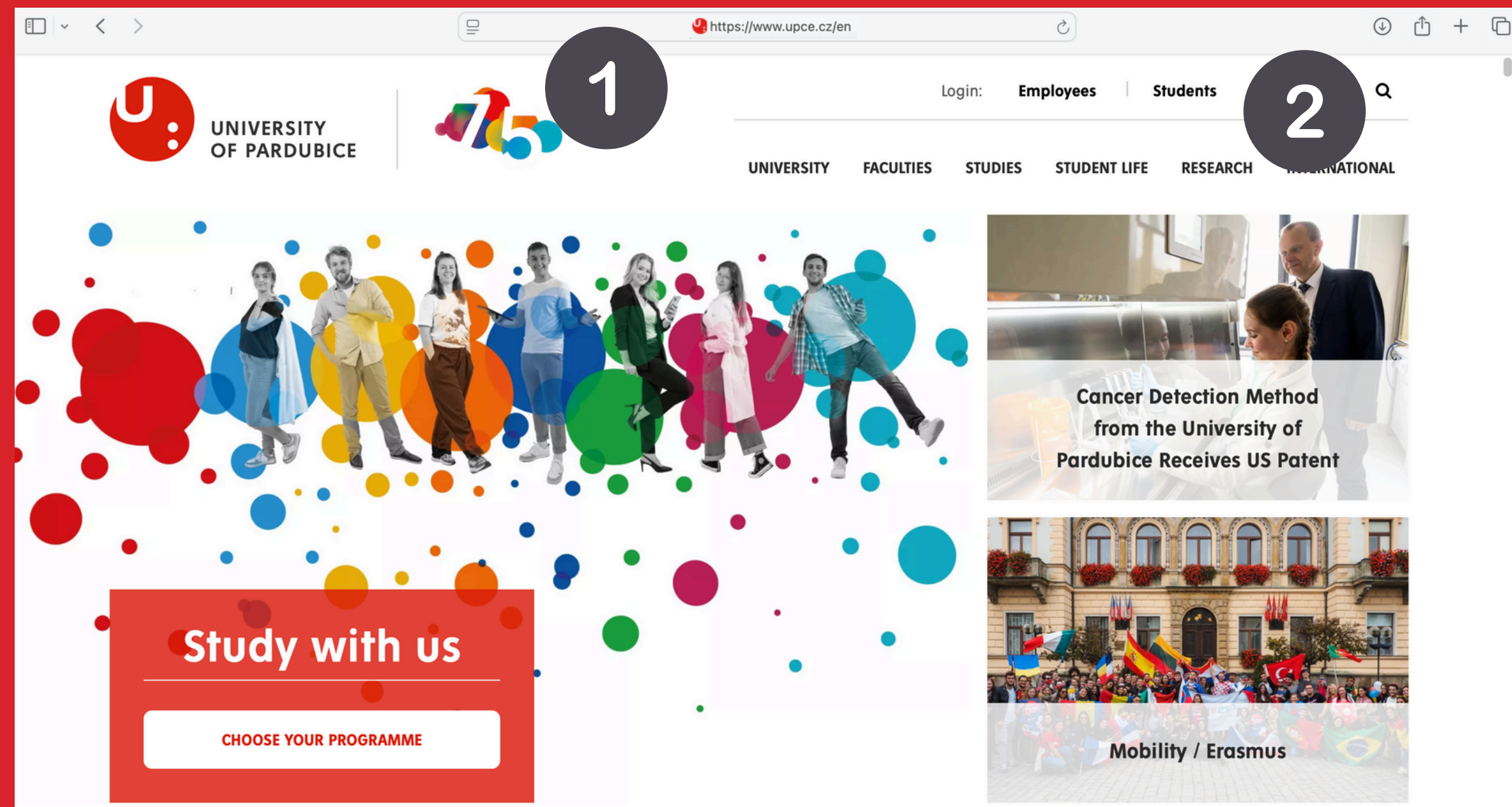


Revisit the following pages

Connect to UPCE systems

Following steps:

- 1) open link
<https://www.upce.cz/en>
- 2) click on "Students"
button
- 3) choose "Intranet" button
- 4) netID@upce.cz



Use your NetID@upce.cz from your student card and follow the instructions for the authentication.

Your password is written on the attached paper after the Czech word „heslo“.

5) go to student intranet

6) click on your name on the top

7) select „Eduroam password” in order to know your personal Wifi password

Wifi name: Eduroam

The screenshot shows the UPCE Student Intranet interface. At the top, the title "UPCE Student Intranet" is displayed. A search bar is located below the title. On the left, a red sidebar menu contains various links: MENU, Study, SAFE UPCE, Library, Accommodation, Catering, Sports, Community Services, Regulations and Notices, Language Centre, STAG portal, University e-mail, Office 365, ServiceDesk, ISIC Card, ALIVE Card, ISKAM, and University glossary. In the top right corner, the user's name "Martina Votoupalová" is shown, with a dropdown menu containing options: View profile, Edit profile, Log out, Vema portal, My data from other systems, Eduroam password, and User blocks settings. Below the search bar, there are two tiles: "Contacts" (People on UPCE) and "Add more" (Add more). The main content area features a "News" section with two articles: "Volodymyr Yermolenko: Thinking in Dark Times" and "Announcement of the 19th session of the Academic Senate of the University of Pardubice". To the right of the news section, there is an "Important" section with a red vertical bar and a "Events" section with a table of upcoming events.

5

6

7

UPCE Student Intranet

Search..

MENU

Study

SAFE UPCE

Library

Accommodation

Catering

Sports

Community Services

Regulations and Notices

Language Centre

STAG portal

University e-mail

Office 365

ServiceDesk

ISIC Card

ALIVE Card

ISKAM

University glossary

Contacts

People on UPCE

Add more

Add more

Continue

Continue

News

Settings

Volodymyr Yermolenko: Thinking in Dark Times

5 hours 42 minutes ago Jan Pražák

The Department of Philosophy and Religious Studies at the University of Pardubice had the honor of welcoming Ukrainian philosopher, journalist, and writer Volodymyr Yermolenko, who accepted our invitation and gave a lecture titled Thinking in Dark Times on April 16, 2025. The lecture took the form...

Announcement of the 19th session of the Academic Senate of the University of Pardubice

1 day 1 hour ago

ANNOUNCEMENT of the 19th session of the Academic Senate of the University of Pardubice in the term of office 2023-2026, to be held in the hybrid form on Tuesday 29 April 2025 at 2 pm in the Rectorate Meeting Room, Studentská 95 (4th floor) Meeting agenda: Approval of

Important

7 months 2 weeks

The Rector informs

Current safety information from UPCE

Events

Settings

Date	Event
Tue, Apr 1 - Wed, Apr 30 2025	Let's get the university moving - Battle of the Faculties 2025
Tue, Apr 29 2025	INVITATION to the 19th session of the Academic Senate of the University of Pardubice

identi.upce.cz/user/8589

Food and Drinks on the Campus



Laborka

building HA
[@laborka_na_upce](#)



Bistro Zastávka

building DB
[@zastavka_bistro_upce](#)



UPCE dining halls

building M
[Get more information about our dining halls](#)

Money

- get your cash on the campus
- exchange money
- open an account



Cashpoint



Exchange office



Banking info – page 10



SAVE FOR LATER



Checklist for the end of your mobility

At the End of your Mobility

- ✓ Talk to your **Faculty Coordinator**.
- ✓ Make sure that all your obligations are settled. This is proven in the **Final Record**.
- ✓ Make sure your **Transcript of Records** is uploaded into the Portal.
- ✓ Fill in the **Farewell questionnaire**. The link will be emailed to you.
- ✓ Ask your faculty coordinator to issue **Confirmation of Study Period**. This can't be done earlier than 3 days before your departure.



Contact Information



Ms. Martina Votoupalová

International Office Coordinator
for Incoming Students

Phone Number

+420 466 036 445

Email Address

martina.votoupalova@upce.cz

